

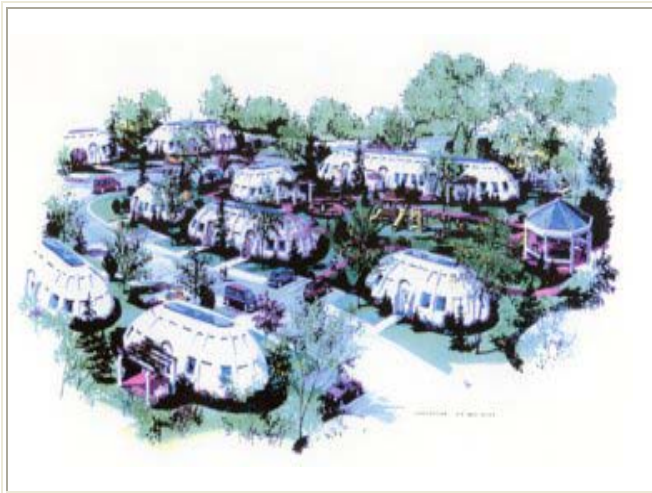
Transglobal Dome Homes

[Home](#) | [Our Product](#) | [About Us](#) | [Contact Us](#) | [Vendors](#) | [Dome Construction](#) | [Executive Summary](#)

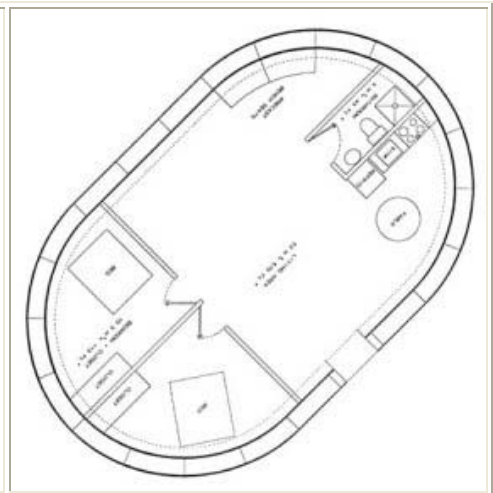
TRANSGLOBAL
DOMES
Housing
The
World



Structural domes predate recorded history and are acknowledged as one of man's earliest habitats. Their strength and ease of construction by nomadic people led to the adoption of the form by early civilizations who refined the process in all types of materials. Many forms of domed structures have survived the vestiges of time, wars and natural disasters. Recent examples are domed buildings that survived at "ground zero" at Hiroshima and Nagasaki, the London Blitz, as well as smaller domes that aerodynamically outlasted Hurricanes Charlie, Katrina and Wilma. The Superdome sustained minimal damage and afforded temporary shelter for tens of thousands. Institutional-use domes are being utilized at the South Pole, as well as military applications in the Canadian Arctic, and the form is part of the design of sea survival and rescue vessels.



Artist's rendition of Transglobal Dome Home Community



Click picture to see larger floorplan

Transglobal Dome Homes has developed a unique product line highlighted by the "Envirodome", a segmented molded fiberglass domed structure that is easily mass-produced, has a strength beyond first impression, is inexpensive, highly mobile and easily erected and maintained.

The "Envirodome" can be combined with the company's proprietary water and sewage purification systems, as well as dew-point water generators and vertical axis wind turbines for electrical power.

Transglobal Dome Homes Structural Application Potential

Housing	Institutional	Government & Business	Recreational
Global Emergency Housing	Food Storage	Military Base Camps	Recreation Resorts
Emergency Shelters	Schools	Civil Defense	Meditation - Retreats
Disaster Camps	Health Recovery	Scientific Laboratories	Campgrounds
Underground Shelters	Field Houses	Chemical Waste Storage	Sports & Entertainment Facilities
Motels/Hotels	Warehouses	Construction Camps	Tourist Accomodations
Rental Units		Seminars & Meetings	

The Transglobal Dome building is composed of a series of interlocking panels that can be configured into unlimited floor plans. Upon receipt of orders, the segmented panels of an individual structure can be shipped by container to almost any part of the world. The destination and use dictate what additional climatic elements are required, such as insulation, protective coating, air conditioning, heating, and so on. Transglobal can provide these features.

"Housing the World" is Transglobal's motto because of the versatility of our structures. We are satisfied that our quality of workmanship will achieve the individual national standards of our consumers and are prepared to submit and achieve the most stringent requirements.

Interest in our units has come from tsunami-struck areas in Sri Lanka and Thailand (100,000 plus homeless families), Pakistan (800,000 homeless), sub-Saharan Africa, and numerous other economically depressed areas internationally.

Inuit communities in Canada typically suffer from domestic overcrowding and Aboriginal leaders of all communities at the National Conference in Kelowna, British Columbia, recently cited housing and local institutional accommodation shortfalls as a major shortage. Housing was one of the key elements to be addressed in the \$5.9 billion approved by all levels of governments at the summit's conclusion.

Clearly, Transglobal Dome Homes has a role to play vis-à-vis this problem.

If you are interested in helping us to solve world housing problems, please go to our contact page for our e-mail address and telephone number.

Design by



RDSweb

